

LIVESTOCK PRODUCTS

AUSTRALIA

EMBARGO: 11.30AM (CANBERRA TIME) TUES 17 AUG 2010

KEY FIGURES

TREND ESTIMATES	Jun Qtr 2009 '000	Mar Qtr 2010 '000	Jun Qtr 2010 '000
Number Slaughtered			
Cattle (excl. calves)	1 961	1 895	1 920
Calves	197	202	208
Sheep	2 662	1 881	1 566
Lambs	5 349	4 813	4 794
Pigs	1 128	1 151	1 145
Chickens	118 248	116 957	119 594

	Jun Qtr 2009 tonnes	Mar Qtr 2010 tonnes	Jun Qtr 2010 tonnes
Meat Produced			
Beef	529 416	516 301	523 599
Veal	7 835	10 165	10 533
Mutton	55 903	41 226	35 442
Lamb	109 878	102 931	102 757
Pig meat	80 999	83 670	83 821
Chicken meat	208 058	209 415	214 288
Wool Receipts	89 306	88 806	88 158

	Mar Qtr 2009 ML	Dec Qtr 2009 ML	Mar Qtr 2010 ML
Whole milk intake by factories	2 346	2 213	2 185

INQUIRIES

For further information about these and related statistics, contact the National Information and Referral Service on 1300 135 070.

KEY POINTS

- The trend estimate for sheep slaughtering in the June quarter 2010 decreased 17% to 1.6 million.
- In the June quarter 2010, mutton production decreased 14% to 35 thousand tonnes.
- Live sheep exports in the June quarter 2010 decreased 27%.
- Exports of live cattle in the June quarter 2010 decreased 11%.

NOTES

FORTHCOMING ISSUES

ISSUE (Quarter)

RELEASE DATE

September 2010

17 November 2010

.....

INTRODUCTION

This publication presents statistics on livestock slaughterings (including chickens), meat production, whole milk intake by factories, market milk sales by factories, receivals of taxable wool by wool brokers and dealers, exports of live sheep and cattle and exports of fresh, chilled, frozen and processed meat. It also includes seasonally adjusted and trend totals for numbers slaughtered, meat produced, whole milk intake and wool receivals. More detailed information can be obtained by contacting the Australian Bureau of Statistics (ABS) or by referring to the monthly ABS publication *Livestock and Meat, Australia* (cat. no. 7218.0.55.001).

.....

ABBREVIATIONS

'000 thousand

\$'000 thousand dollars

ABS Australian Bureau of Statistics

ML megalitre

t tonne

UHT ultra heat treated

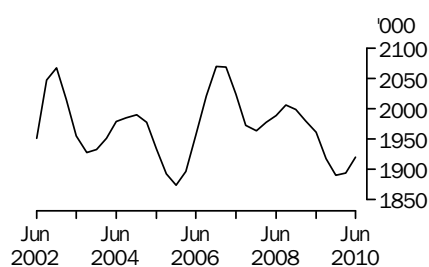
°C degrees Celsius

Brian Pink

Australian Statistician

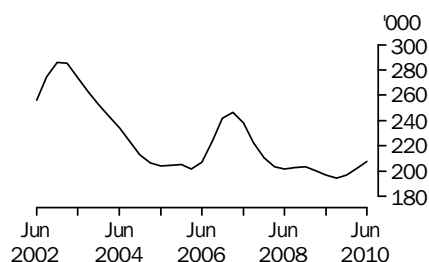
LIVESTOCK SLAUGHTERED TREND

CATTLE (EXCLUDING CALVES)



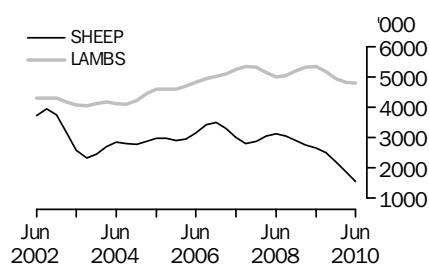
In the June quarter 2010, the number of cattle (excluding calves) slaughtered increased 1% to 1.9 million compared to the previous quarter.

CALVES



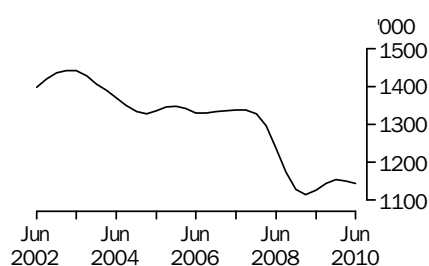
The number of calves slaughtered in the June quarter 2010 increased 3% to 208 thousand compared to the previous quarter.

SHEEP AND LAMBS



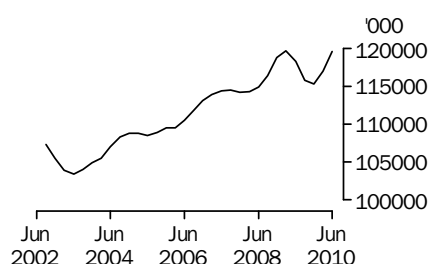
The number of sheep slaughtered in the June quarter 2010 fell 17% to 1.6 million compared to the previous quarter. Lamb slaughterings remained steady at 4.8 million.

PIGS



Pig slaughterings in the June quarter 2010 remained steady at 1.1 million compared to the previous quarter.

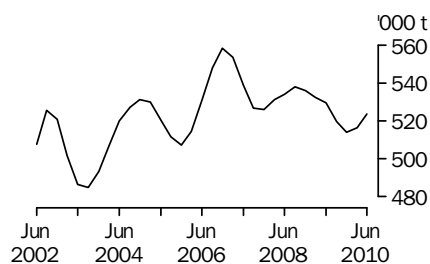
CHICKENS



Chicken slaughterings in the June quarter 2010 increased 2% to 119.6 million compared to the previous quarter

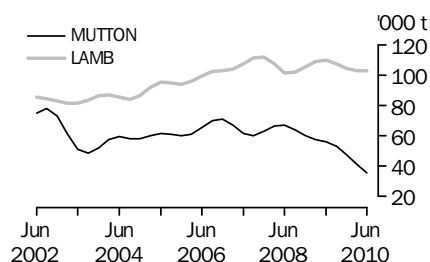
MEAT PRODUCTION TREND

BEEF



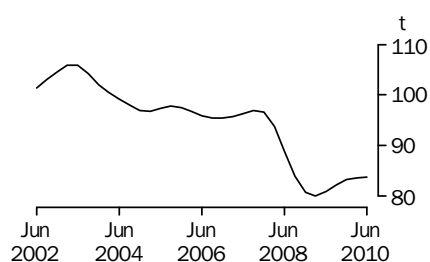
Beef production in the June quarter 2010 increased 1% to 524 thousand tonnes compared to the previous quarter.

MUTTON AND LAMB



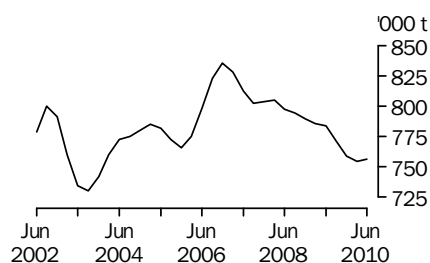
Mutton production in the June quarter 2010 decreased 14% to 35 thousand tonnes compared to the previous quarter. Lamb production remained little changed compared to the previous quarter, at 103 thousand tonnes.

PIG MEAT



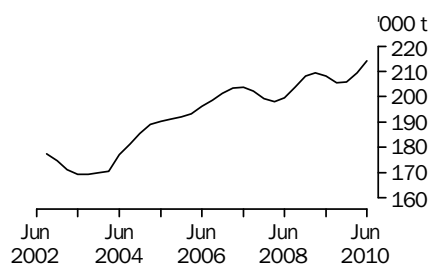
In the June quarter 2010, pig meat production remained little changed compared to the previous quarter, at 84 thousand tonnes.

TOTAL RED MEAT



Total red meat production remained little changed compared to the previous quarter, at 756 thousand tonnes.

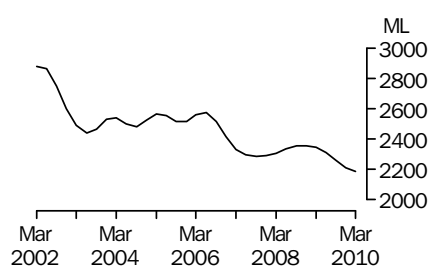
CHICKEN MEAT



Chicken meat production in the June quarter 2009, increased 2% to 214 thousand tonnes compared to the previous quarter.

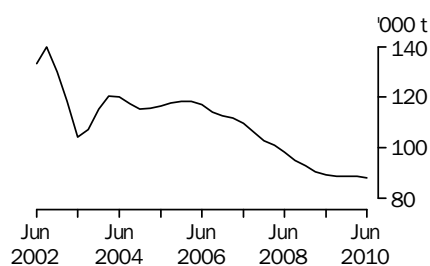
LIVESTOCK PRODUCTS TREND

WHOLE MILK INTAKE BY FACTORIES



Whole milk intake by factories in the March quarter 2010 decreased by 1% to 2,185 megalitres compared to the December quarter 2009.

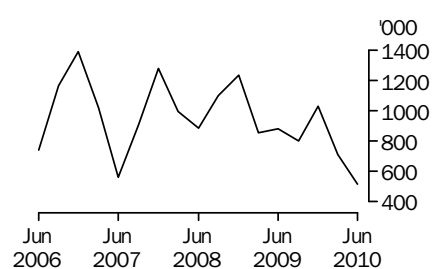
BROKERS AND DEALERS RECEIVALS OF TAXABLE WOOL



In the June quarter 2010, wool receipts by brokers and dealers decreased by 1% to 88 thousand tonnes compared to the March quarter 2010.

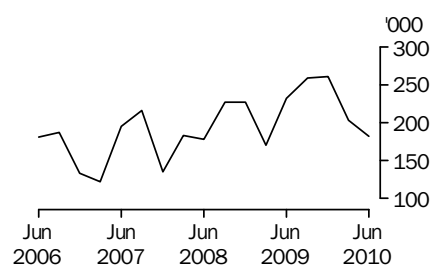
LIVESTOCK EXPORTS ORIGINAL

EXPORTS OF LIVE SHEEP



Live sheep exports in the June quarter 2010 decreased 27% to 515 thousand compared to the previous quarter.

EXPORTS OF LIVE CATTLE



Exports of live cattle in the June quarter 2010 decreased 11% to 182 thousand compared to the previous quarter.

LIST OF TABLES AND GRAPHS

page

OVERVIEW

1	Livestock slaughtered, Australia	8
2	Livestock products, Australia	9

EXPORTS OF MEAT AND LIVE ANIMALS

3	Exports of fresh, chilled, frozen and processed meat, Australia	10
4	Exports of live sheep and cattle, Australia	11

LIVESTOCK PRODUCTS

5	Whole milk intake by factories, by state	12
6	Market milk sales by factories, by state	13
7	Brokers and dealers receivals of taxable wool, by state	14

LIVESTOCK SLAUGHTERED(a), Australia: All Series

Quarter	Bulls, bullocks and steers '000	Cows and heifers '000	Cattle (excluding calves) '000	Calves '000	Sheep '000	Lambs '000	Pigs '000	Chickens(b) '000
ORIGINAL								
2009								
March	951.6	952.7	1 904.3	106.2	3 157.7	5 310.1	1 067.6	119 183.8
June	936.3	1 053.1	1 989.5	194.8	2 428.5	5 150.5	1 158.1	118 850.7
September	1 061.9	968.2	2 030.2	344.4	2 028.5	5 118.1	1 157.5	112 897.9
December	986.7	838.9	1 825.6	135.4	2 577.4	5 287.0	1 162.3	117 779.2
2010								
March	913.6	876.8	1 790.5	110.6	2 091.0	4 619.0	1 101.8	115 882.3
June	982.9	1 064.1	2 047.0	199.5	1 405.6	4 826.4	1 184.8	119 117.2
SEASONALLY ADJUSTED								
2009								
March	1 004.7	994.9	1 999.7	201.7	2 765.4	5 317.6	1 105.0	120 168.2
June	945.4	955.0	1 900.3	200.3	2 690.0	5 233.6	1 121.8	120 309.7
September	1 027.5	978.8	2 006.3	191.9	2 497.0	5 358.9	1 156.9	113 322.5
December	957.7	881.9	1 839.6	192.4	2 251.0	4 963.8	1 159.7	114 965.8
2010								
March	948.3	898.8	1 847.1	207.2	1 834.8	4 489.7	1 142.0	116 968.3
June	1 010.8	984.7	1 995.4	206.6	1 557.6	5 074.0	1 147.9	120 399.0
TREND								
2009								
March	986.6	993.2	1 979.9	200.3	2 757.9	5 311.0	1 115.2	119 616.4
June	986.3	974.9	1 961.3	196.9	2 662.1	5 349.2	1 127.5	118 248.1
September	979.6	937.5	1 917.1	194.7	2 496.3	5 171.1	1 145.0	115 757.0
December	973.8	916.8	1 890.6	196.6	2 205.5	4 954.9	1 153.7	115 278.2
2010								
March	974.0	920.6	1 894.6	202.0	1 880.7	4 813.2	1 150.8	116 956.9
June	978.2	941.4	1 919.6	208.0	1 566.3	4 793.9	1 144.9	119 594.3

(a) For human consumption. refer to paragraph 7 in the Explanatory Notes.

(b) Excludes Tasmania, Northern Territory and the Australian Capital Territory.

Quarter	RED MEAT(a)							Whole milk intake by factories(b)	Brokers and dealers receivables of taxable wool(c)
	Beef	Veal	Mutton	Lamb	Pig meat	Total red meat	Chicken meat(d)(e)	ML	tonnes
	tonnes	tonnes	tonnes	tonnes	tonnes	tonnes	tonnes		
ORIGINAL									
2009									
March	517 143	5 538	64 962	111 218	76 043	774 904	208 725	2 153	93 538
June	530 661	7 286	48 487	106 668	83 897	776 999	209 761	1 797	75 378
September	550 015	12 671	43 981	103 932	84 650	795 250	203 116	2 252	86 170
December	497 725	8 149	57 974	109 747	82 033	755 628	206 992	r2 849	106 033
2010									
March	490 184	7 630	44 608	99 340	79 595	721 358	206 710	2 048	89 339
June	555 301	9 904	30 553	106 595	87 936	790 289	217 591	nya	71 195
SEASONALLY ADJUSTED									
2009									
March	539 401	7 577	57 662	110 719	79 257	794 617	210 603	2 333	93 370
June	511 954	7 483	55 964	106 413	80 379	762 192	209 261	2 343	91 068
September	544 111	8 688	53 472	110 886	83 404	800 562	204 637	2 250	83 656
December	500 474	9 740	48 858	103 684	83 480	746 236	203 976	2 182	92 706
2010									
March	503 411	10 219	39 678	99 048	83 041	735 397	208 943	2 211	88 962
June	544 200	10 404	35 277	106 563	84 270	780 715	216 789	nya	86 094
TREND									
2009									
March	532 214	7 151	57 373	108 772	80 097	785 606	209 496	2 346	90 701
June	529 416	7 835	55 903	109 878	80 999	784 030	208 058	2 311	89 306
September	519 664	8 696	53 070	107 180	82 278	770 888	205 570	2 258	88 931
December	513 970	9 518	47 554	104 455	83 327	758 825	205 845	2 213	88 798
2010									
March	516 301	10 165	41 226	102 931	83 670	754 293	209 415	2 185	88 806
June	523 599	10 533	35 442	102 757	83 821	756 152	214 288	nya	88 158

nya not yet available

r revised

(a) Carcass weight excluding offal. Refer to paragraphs 5 and 6 in the Explanatory Notes.

(b) Original data sourced from Dairy Australia. Includes whole milk equivalent of farm cream intake.

(c) Taxable receivables only. Refer to paragraphs 21 and 22 in the Explanatory Notes.

(d) Excludes Tasmania, Northern Territory and the Australian Capital Territory.

(e) Dressed weight of whole birds, pieces and giblets.

EXPORTS OF FRESH, CHILLED, FROZEN AND PROCESSED MEAT(a)(b), Australia: **Original**

FRESH, CHILLED OR FROZEN MEAT										PROCESSED MEAT	
	Beef bone-in(c)	Beef bone-out(c)	Veal bone-in	Veal bone-out	Mutton bone-in	Mutton bone-out	Lamb bone-in	Lamb bone-out	Pork	Bacon and ham(d)	Canned meat(e)
Period	tonnes	tonnes	tonnes	tonnes	tonnes	tonnes	tonnes	tonnes	tonnes	tonnes	tonnes
2007-08	57 199	917 494	3 704	5 049	119 496	43 827	134 101	32 499	39 138	772	12 493
2008-09	47 925	954 473	4 102	4 594	107 004	44 119	131 144	31 254	32 258	464	12 852
2009-10	48 695	883 996	4 677	3 555	85 103	31 517	125 630	34 934	29 982	167	13 499
2009											
March	9 708	216 388	645	570	29 110	12 498	34 177	8 807	7 528	64	2 940
June	12 279	241 498	1 069	839	25 174	9 561	33 688	8 275	7 666	32	3 243
September	11 958	230 695	1 474	1 260	18 708	6 813	30 939	6 813	7 625	58	3 482
December	12 421	226 420	1 226	1 023	27 768	10 416	38 124	9 455	7 222	57	3 722
2010											
March	r10 076	r177 695	r609	r582	r23 205	r7 183	r25 393	r7 315	r7 150	r32	r2 960
June	14 240	249 185	1 367	691	15 422	7 105	31 174	11 351	7 986	20	3 335
r	revised					(d) Cured carcass weight, and state net weight of packs of canned bacon and ham. Refer to paragraph 13 in the Explanatory Notes.					
(a)	Compiled from Australian Customs Service data. Refer to paragraph 11 in the Explanatory Notes.					(e) Canned meat excludes bacon and ham. Refer to paragraph 14 in the Explanatory Notes.					
(b)	Export data may be subject to revision.										
(c)	Includes buffalo meat.										

EXPORTS OF LIVE SHEEP AND CATTLE(a), Australia: **Original**

<i>Period</i>	<i>Number</i>	<i>Gross weight</i>	<i>Gross value</i>	<i>Unit value(b)</i>
	'000	'000 tonnes	\$'000	\$
.....				
SHEEP				
2007-08	4 069.0	197.0	286 442	70.40
2008-09	4 063.9	199.0	339 083	83.44
2009-10	3 055.4	145.9	296 763	97.13
2009				
March	852.8	43.0	73 316	85.97
June	878.1	42.8	77 751	88.55
September	801.8	38.7	76 827	95.82
December	1 030.0	50.1	93 851	91.12
2010				
March	r708.3	r33.3	r68 408	r96.59
June	515.3	23.9	57 677	111.93
.....				
CATTLE				
2007-08	713.3	241.2	450 511	631.63
2008-09	856.0	285.0	558 695	652.67
2009-10	904.0	308.0	596 883	660.26
2009				
March	170.3	57.8	114 672	673.49
June	231.8	80.5	141 817	611.80
September	258.5	86.4	161 035	622.84
December	260.7	90.8	172 174	660.37
2010				
March	r203.2	r68.0	r148 028	r728.62
June	181.6	62.8	115 646	636.88

r revised

(a) Export data may be subject to revision.

(b) Gross value divided by the number of animals exported

WHOLE MILK INTAKE, by Factories(a): All Series

	New South Wales(b)	Victoria	Queensland	South Australia(c)	Western Australia	Tasmania	Australia
Quarter	ML	ML	ML	ML	ML	ML	ML
ORIGINAL							
2008							
December	296	2 112	138	185	100	268	3 098
2009							
March	251	1 364	125	148	78	186	2 153
June	247	1 083	120	145	77	124	1 797
September	283	1 480	139	147	84	119	2 252
December	294	1 886	142	177	101	249	2 849
2010							
March	253	1 269	128	142	82	174	2 048
SEASONALLY ADJUSTED							
2008							
December	264	1 547	128	157	87	173	2 357
2009							
March	268	1 514	131	157	86	177	2 333
June	271	1 517	132	157	83	183	2 343
September	274	1 443	133	154	83	164	2 250
December	263	1 387	131	151	88	161	2 182
2010							
March	269	1 411	133	151	90	157	2 211
TREND							
2008							
December	265	1 544	127	157	86	178	2 357
2009							
March	268	1 526	130	157	85	178	2 346
June	271	1 493	132	156	84	176	2 311
September	270	1 449	132	154	84	169	2 258
December	268	1 413	132	152	87	161	2 213
2010							
March	267	1 390	133	150	90	156	2 185

r revised

(a) Includes whole milk equivalent of farm cream intake.

Refer to the Explanatory Notes for further information.

(b) Includes data for the Australian Capital Territory.

(c) Includes data for the Northern Territory.

Source: Original series data from Dairy Australia.

MARKET MILK SALES, by Factories(a): All Series

	<i>New South Wales(b)</i>	<i>Victoria</i>	<i>Queensland</i>	<i>South Australia(c)</i>	<i>Western Australia</i>	<i>Tasmania</i>	<i>Australia</i>
<i>Quarter</i>	ML	ML	ML	ML	ML	ML	ML
ORIGINAL							
2008							
December	172	132	125	52	61	14	556
2009							
March	172	131	127	51	59	14	553
June	176	136	128	53	59	14	567
September	180	141	132	55	62	14	583
December	r182	134	r125	55	63	14	r572
2010							
March	176	133	124	55	61	14	562
SEASONALLY ADJUSTED							
2008							
December	173	134	126	52	61	14	560
2009							
March	175	133	129	52	60	14	563
June	175	135	129	53	59	14	565
September	177	138	128	53	61	14	571
December	183	135	126	55	62	14	576
2010							
March	179	135	125	56	62	14	571
TREND							
2008							
December	173	133	127	52	61	14	560
2009							
March	174	134	128	52	60	14	562
June	176	135	129	53	60	14	567
September	178	136	128	54	61	14	571
December	180	136	126	55	62	14	573
2010							
March	181	135	125	56	62	14	574

r revised

(a) Includes white, flavoured, high and low fat milk and UHT milk. Refer to the Explanatory Notes for further information.

(b) Includes data for the Australian Capital Territory.

(c) Includes data for the Northern Territory.

Note: Source: Original series data from Dairy Australia.

BROKERS AND DEALERS RECEIVALS OF TAXABLE WOOL(a): All series

	New South Wales	Victoria	Queensland	South Australia	Western Australia	Tasmania	Australia	% of total received by brokers
Quarter	tonnes	tonnes	tonnes	tonnes	tonnes	tonnes	tonnes	%
ORIGINAL								
2009								
March	27 243	22 865	1 886	12 232	27 767	1 545	93 538	79.3
June	25 102	18 833	3 363	10 893	14 767	2 419	75 378	77.3
September	32 534	19 880	3 072	12 344	15 585	2 756	86 170	82.5
December	31 358	29 135	2 190	17 318	23 032	3 000	106 033	79.7
2010								
March	26 688	21 369	1 212	12 572	25 572	1 925	89 339	77.8
June	25 497	19 142	2 343	9 206	12 412	2 594	71 195	78.6
SEASONALLY ADJUSTED								
2009								
March	30 127	23 404	2 742	12 955	21 977	2 166	93 370	..
June	28 511	22 528	2 816	13 498	21 274	2 441	91 068	..
September	28 432	21 635	2 437	11 415	17 234	2 504	83 656	..
December	29 349	22 938	2 552	14 970	20 343	2 553	92 706	..
2010								
March	29 386	21 968	1 765	12 981	20 236	2 625	88 962	..
June	29 016	22 777	1 951	11 760	17 996	2 593	86 094	..
TREND								
2009								
March	29 262	22 426	2 690	12 678	21 388	2 257	90 701	..
June	28 865	22 460	2 723	12 649	20 241	2 367	89 306	..
September	28 789	22 334	2 582	13 197	19 532	2 497	88 931	..
December	28 998	22 251	2 301	13 325	19 353	2 569	88 798	..
2010								
March	29 253	22 435	2 039	13 093	19 390	2 596	88 806	..
June	29 262	22 584	1 876	12 600	19 226	2 611	88 158	..
..	not applicable							
	(a) Taxable receivals only. Refer to the Explanatory Notes for further information.							

EXPLANATORY NOTES

INTRODUCTION

- 1** This publication contains information on livestock slaughterings (including chickens), meat production, exports of live sheep and cattle, exports of fresh, chilled, frozen and processed meat, whole milk intake by factories, market milk sales by factories and receivals of taxable wool by wool brokers and dealers.
- 2** Data in this publication have been revised where necessary and as a consequence may not agree with similar data shown in previous publications.
- 3** Where figures have been rounded, discrepancies may occur between sums of the component items and totals.
- 4** Unless otherwise indicated, Australian totals include data for all states/territories.

LIVESTOCK SLAUGHTERINGS AND MEAT PRODUCTION

- 5** The statistics on slaughterings for red meat production are based on a monthly collection from abattoirs and other major slaughtering establishments and include estimates of animals slaughtered on farms, by country butchers and other small slaughtering establishments.
- 6** Red meat is shown in carcass weight and excludes offal.
- 7** Care should be taken when using this information as the data only relate to slaughterings for human consumption and do not include animals condemned, slaughtered for pet food or those killed for boiling down.
- 8** Statistics for poultry slaughterings and chicken meat produced have been compiled from quarterly returns supplied by commercial poultry slaughtering establishments and comprise boilers, fryers and roasters. Many small producers are excluded from the collection; however, the statistics represent a high level of coverage.
- 9** Chicken meat is shown in dressed weight of whole birds, pieces and giblets.
- 10** Details about unpublished slaughterings and meat production statistics can be found in the Livestock Slaughtering Collection brief on the Australian Bureau of Statistics (ABS) website and also are available on request. Inquiries should be made to the *National Information and Referral Service* on 1300 135 070.

EXPORTS OF FRESH, CHILLED, FROZEN AND PROCESSED MEAT

- 11** International trade statistics are compiled by the ABS from information submitted to the Australian Customs Service by exporters and importers or their agents. Factors are applied to beef, veal, mutton and lamb bone-out figures to calculate a derived bone-in carcass weight. The derived bone-in carcass weights are then added to bone-in figures to calculate total exports in carcass weight. The factor for beef and veal is 1.5 and for mutton and lamb, 2.0. This information is sourced from the Australian Department of Agriculture, Fisheries and Forestry.
- 12** Beef also includes buffalo meat.
- 13** Bacon and ham shown is the cured carcass weight of smoked or cooked bacon and ham. It also includes the stated net weight of packs of canned bacon and ham.
- 14** Canned meat is shown as the canned weight and excludes canned bacon and ham.

LIVE SHEEP AND CATTLE EXPORTS

- 15** Sheep and cattle exported for breeding are excluded.
- 16** The unit value is obtained by dividing the gross value by the number of animals exported.
- 17** The graphs of livestock exports present quarterly original estimates for at least the last five years for the major commodities. These graphs highlight the major movements in the estimates over that period.

MILK

- 18** Milk data collected by Dairy Australia. Data for the latest quarter are not yet available.

EXPLANATORY NOTES *continued*

MILK *continued*

19 Whole milk intake by factories includes the whole milk equivalent of farm cream intake.

20 Market sales includes white, flavoured, high and low fat milk and ultra heat treatment (UHT) milk. Interstate transfers of UHT milk have been included in their state of destination. UHT milk is milk that is heated to high temperatures to produce a milk which does not require refrigeration for a sustained period of time when unopened.

WOOL RECEIVALS

21 Wool receivals refers to the amount of taxable wool received by brokers and purchased by dealers from wool producers. It excludes wool received by brokers on which tax has already been paid by other dealers (private buyers) or brokers.

22 Data are based on the state in which wool has been received, and do not necessarily reflect the production of wool in that state.

SEASONAL ADJUSTMENT

23 Seasonal adjustment is a means of removing the estimated effects of normal seasonal variation from the series so that the effects of other influences can be more clearly recognised.

24 In the seasonal adjustment of the livestock estimates, account has been taken of both normal seasonal factors and 'trading day' effects, where significant. Seasonal adjustment does not remove from the series the effect of irregular influences (e.g. abnormal weather, industrial disputes).

25 The state component series has been seasonally adjusted independently. Therefore, the adjusted components may not add to the Australian group totals.

26 In this publication, the seasonally adjusted estimates are produced by the concurrent seasonal adjustment method which takes account of the latest available original estimates. This method improves the estimation of seasonal factors and, therefore, the seasonally adjusted and trend estimates for the current and previous months. As a result of this improvement, revisions to the seasonally adjusted and trend estimates will be observed for recent periods. A more detailed review is conducted annually prior to the September release, using data up to and including the August release.

27 For further information, see *Time Series Analysis Frequently Asked Questions, 2003* (cat. no. 1346.0.55.002).

28 From September 2007, improved methods of producing seasonally adjusted estimates, focused on the application of Autoregressive Integrated Moving Average (ARIMA) modelling techniques, were implemented. The ARIMA modelling technique can be used to extend original estimates beyond the end of a time series.

29 For further information on ARIMA modelling, see the feature article '*Use of ARIMA modelling to reduce revisions*' in *Australian Economic Indicators, Oct 2004* (cat. no. 1350.0).

TREND ESTIMATES

30 The graphs of livestock slaughtered, meat production and livestock products present quarterly trend estimates for at least the last five years for the major commodities. These graphs highlight the major movements in the estimates over that period.

31 A trend estimate is obtained by reducing the irregular component in the seasonally adjusted series. For quarterly data, trend estimates are derived by applying a 7-term Henderson moving average to the seasonally adjusted series. Revisions of trend estimates will also occur with revisions to the original data and re-estimation of seasonal factors.

32 The state component series has been adjusted independently. Therefore, the adjusted components may not add to the Australian group totals.

EXPLANATORY NOTES *continued*

TREND ESTIMATES *continued*

33 For further information, see *Information Paper: A Guide to Interpreting Time Series - Monitoring Trends, 2003* (cat. no. 1349.0).

RELATED PUBLICATIONS

34 Other ABS publications containing livestock data include:

- *Agricultural Commodities, Australia* (cat. no. 7121.0)
- *Agricultural Commodities: Small Area Data, Australia* (cat. no. 7125.0)
- *Livestock and Meat, Australia* (cat. no. 7218.0.55.001)
- *Value of Agricultural Commodities Produced, Australia* (cat. no. 7503.0)

35 Current publications and other products released by the ABS are listed under the Statistics and Topics @ a Glance pages on the ABS website <<http://www.abs.gov.au>>. The ABS also issues a daily Release Advice on the website which details products to be released in the week ahead.

GENERAL ACKNOWLEDGMENT

36 ABS publications draw extensively on information provided freely by individuals, businesses, governments and other organisations. Their continued cooperation is very much appreciated. Without it, the wide range of statistics published by the ABS would not be available. Information received by the ABS is treated in strict confidence as required by the *Census and Statistics Act 1905*.

FOR MORE INFORMATION . . .

INTERNET **www.abs.gov.au** the ABS website is the best place for data from our publications and information about the ABS.

INFORMATION AND REFERRAL SERVICE

Our consultants can help you access the full range of information published by the ABS that is available free of charge from our website. Information tailored to your needs can also be requested as a 'user pays' service. Specialists are on hand to help you with analytical or methodological advice.

PHONE 1300 135 070

EMAIL client.services@abs.gov.au

FAX 1300 135 211

POST Client Services, ABS, GPO Box 796, Sydney NSW 2001

FREE ACCESS TO STATISTICS

All statistics on the ABS website can be downloaded free of charge.

WEB ADDRESS **www.abs.gov.au**